

growth

Shiv, Nokia
9 June 2008

© 2008 Nokia
Company Confidential

1 V1-Filename.ppt /

NOKIA

What is Growth ?

What is the **alternative** to Growth ?



Yes, Stagnation, **Death**





What does Growth do ?





**Hungry, Alive, Young,
Respected,**

Employment Choice,

keeps costs down,

helps eco system

Company Confidential

CISCO SYSTEMS



Google™

Let's look at

Growth

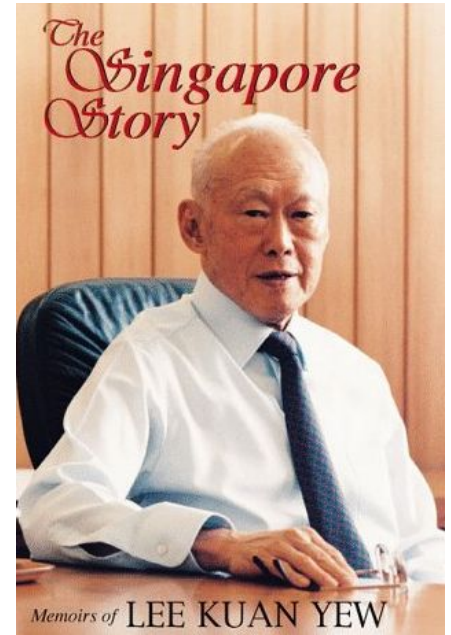
companies

Infosys®



Reliance
Industries Limited

Lets look at
Growth



leaders/manager
s

 Electrolux



Why do grown companies stall?

**Growth is a Mindset
issue.**

Embrace ? Scared ?



2. Growth is about **The** **POND !**



3. Growth is about Choices

4. Growth is about people



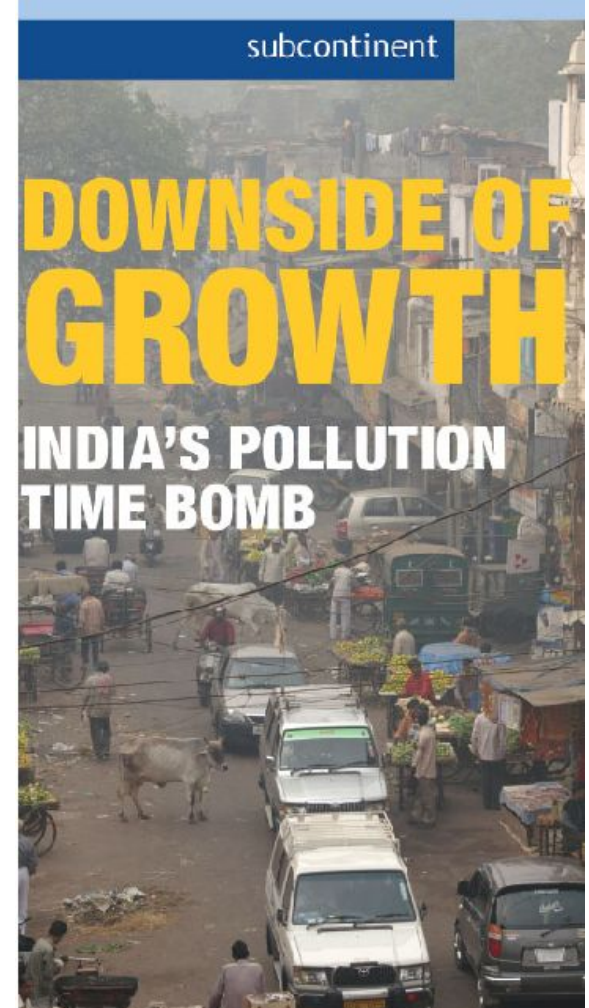
5. Growth is about measures



6. Not all growth is good.

7. Good Growth

8. Bad growth



**9. What will you
do to grow
yourself?**

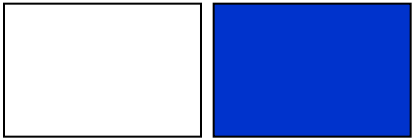
**10. What will you
do to grow the
business?**

Masterbrand color palette

Note:

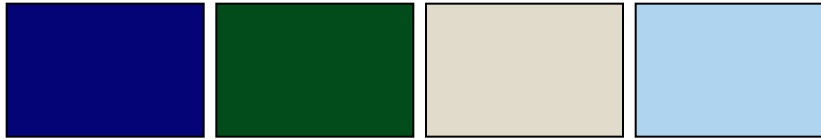
To prevent printing a hidden slide (like this), de-select "Printing hidden slides" option in print menu.

Core white & blue



R 255	R 000
G 255	G 051
B 255	B 204

Neutrals



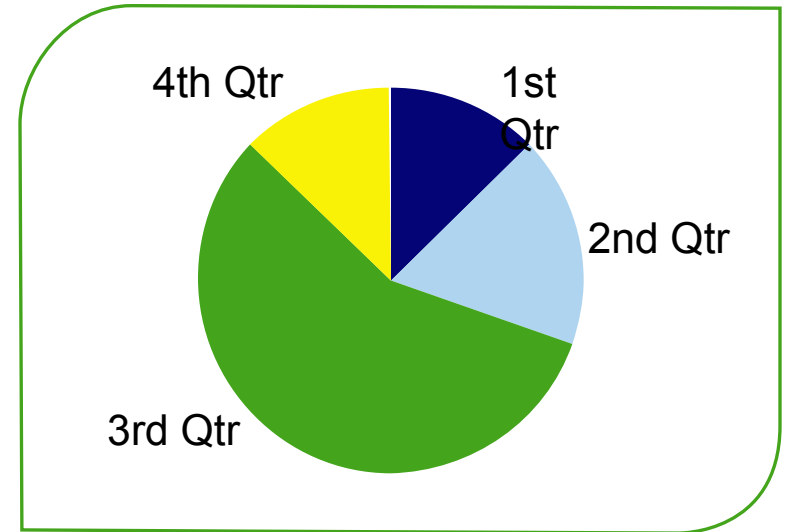
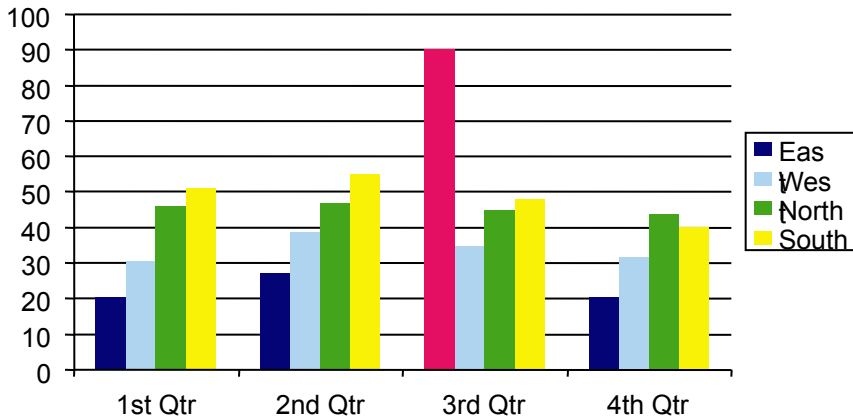
R 004	R 002	R 224	R 175
G 004	G 076	G 219	G 212
B 119	B 028	B 202	B 240

Brights



R 249	R 068	R 228
G 242	G 165	G 014
B 006	B 028	B 098

The pink highlight color is to be used sparingly, not in large areas and can only be used as 100%, never as a tint.



Working with images

Adding a background (full bleed) image

- 1) Right-click on a blank space on a slide (or, Format > Background)
- 2) Select: Fill effects > Picture > Select picture, and browse to find wanted background picture > Apply (or Apply to all).

Note: ensure that the dimensions are according to PowerPoint page setup (A4 by default).

- To **delete existing background** (picture or color), select white color from “Background fill” color palette.
- To **save the background image**, right-click the slide outside of any placeholders and click “Save Background”.
- To **retain the slides' original formatting**, click the “Paste Options” button which appears under the slides you pasted > on the button menu, click “Keep Source Formatting”.
- If you decide you want the **current design template** styles to apply, click “Use Design template formatting” (this is the default).

When full bleed photography is not used, images should appear in Nokia shapes:

- The square leaf (“squeaf”) and the square circle (“squircle”)
- Preferably, place the image(s) on right side of the slide
- For more info, check “Nokia slide set guidelines” in Nokia Brand Book

